

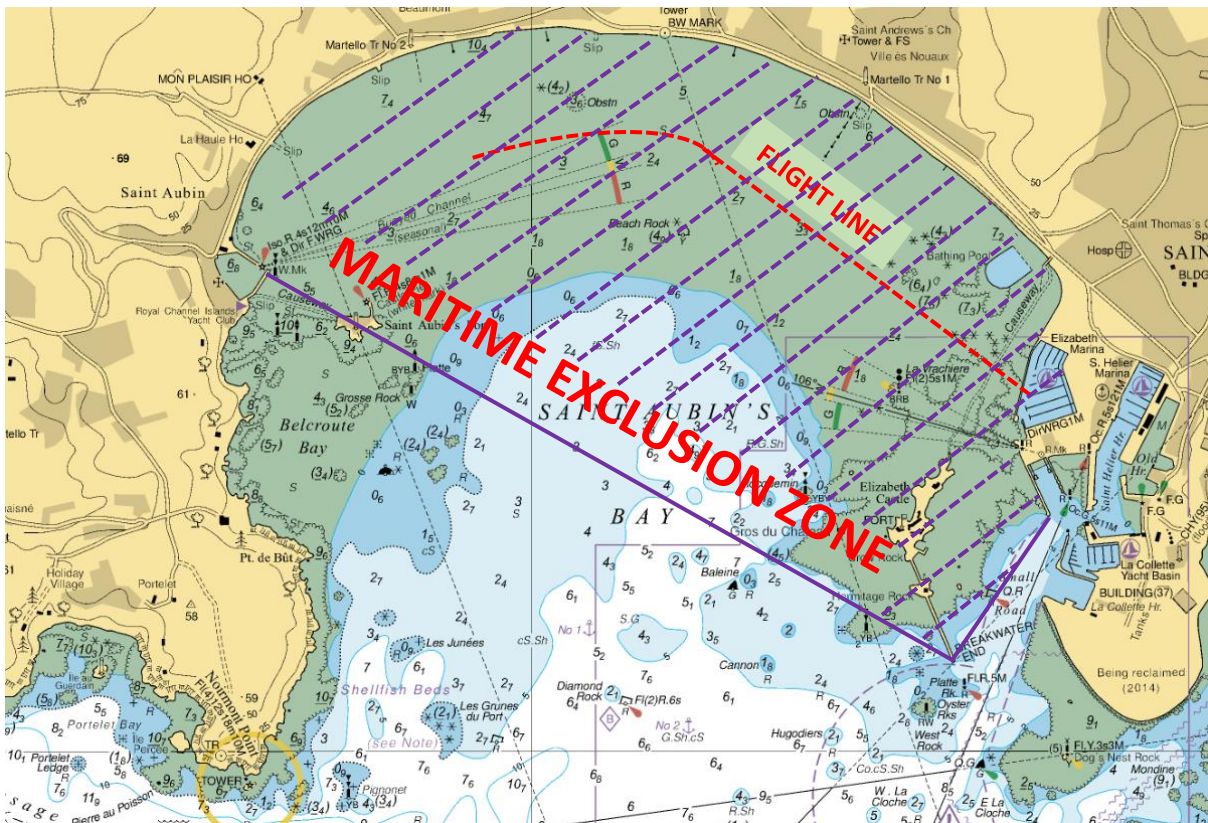
JERSEY INTERNATIONAL AIR DISPLAY

ST AUBIN'S BAY - EXCLUSION ZONE

WEDNESDAY 07th SEPTEMBER 2016; 13:00 – 18:00

THURSDAY 08th SEPTEMBER 2016; 12:30 – 17:00

Following CAA recommendations resulting from the Shoreham Air Show crash investigation the display line has been moved further to seaward from St Aubin's sea wall. As a result the maritime exclusion zone has been increased and also moved further south.



The Harbour Master has declared the following area as a Maritime Exclusion Zone, from north of a line between Elizabeth Harbour west wall, south end of Elizabeth Castle breakwater through St Aubin's Fort to St Aubin's Harbour south arm.

Navigation and anchoring is prohibited during the above times.

Mariners should note that during these times, access to and from Elizabeth Marine including the approach channel is prohibited. Access to and from St Aubin's Harbour and the outer moorings at St Aubin's is also closed.

This exclusion zone is issued as a Notice to Mariners and a Harbour Master's Direction under Regulation 3 (1) a) of Harbours (Jersey) Regulations 1962. Failure to comply with a Harbour Master's Direction is an offence which carries a fine of up to £500.